

MPXWBA

WALL MOUNT BRACKET



DESCRIPTION

Thick AISI 316L stainless steel MAXIMUS Pan & Tilt bracket. It fits perfectly with MPXCOL and MPXCW pole and corner adaptors.

TECHNICAL DATA

MECHANICAL

Made of AISI 316L electropolished stainless steel

Load rating: 40kg (88lb)

Length: 400mm (15.7in)

Can be coupled with modular components: MPXCW, MPXCOL

Unit weight: 5.4kg (11.9lb)

PART NUMBER

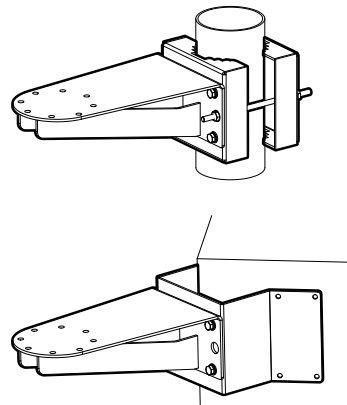
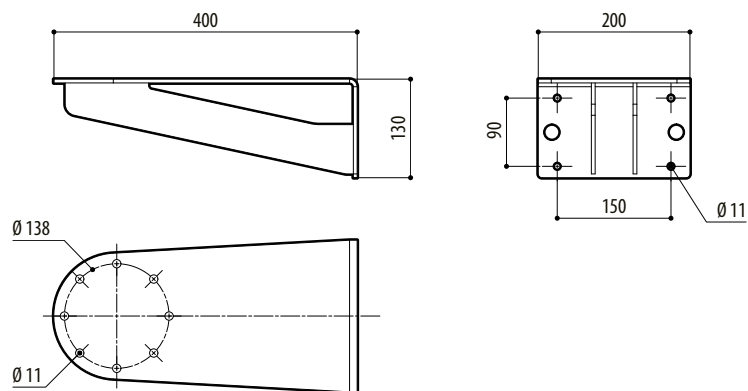
MPXWBA AISI 316L stainless steel wall bracket

PACKAGE

Model Number	Weight	Dimensions (WxHxL)	Master carton
MPXWBA	6.1kg (13.5lb)	43.5x42x20cm (17x16.5x8in)	4

TECHNICAL DRAWINGS

The indicated measurements are expressed in millimetres.



MPXWBA