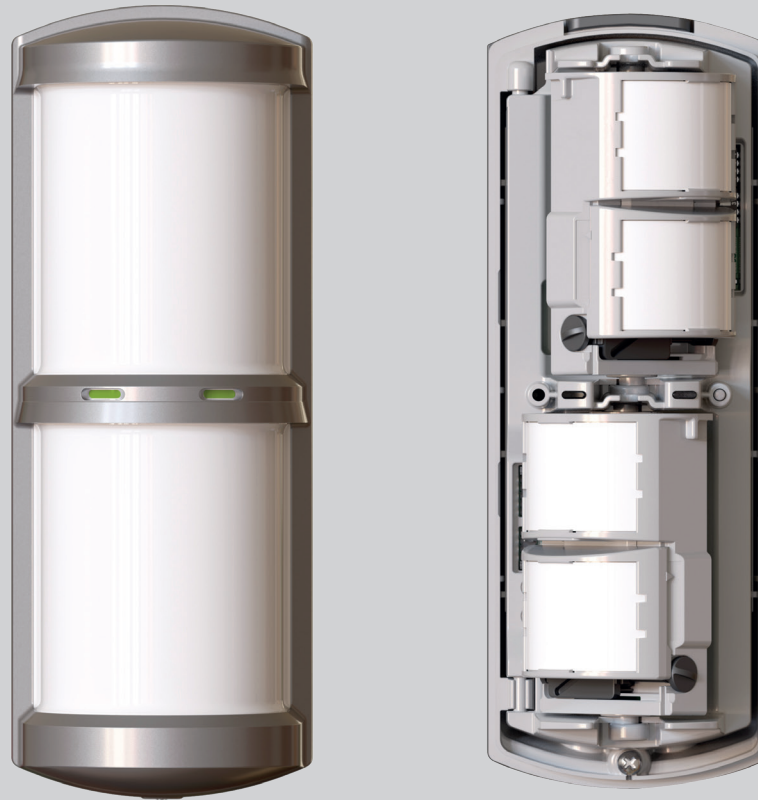


## XD4 Series

Wired & Wireless 180° External Detectors

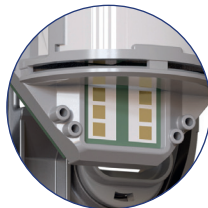




**Hinged PCB**  
Hinged PCB for easy wiring access.  
Easily detachable if required.



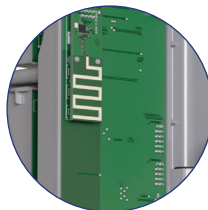
**Microwave Sensor**  
Optional Dual Technology versions available.



**Removable PCB Assembly**  
The detector assembly may be removed from the backplate for easy installation.



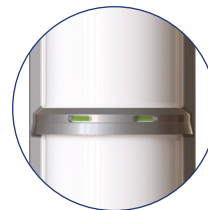
**Optional Wireless Access Point**  
Adds wireless connectivity to a wired device enabling full wireless integration and/or use of the Wireless Walk Test Fob.



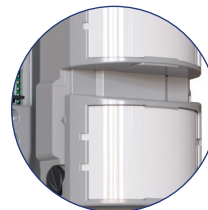
**Optional Wall Tamper**  
(Lid tamper comes as standard).



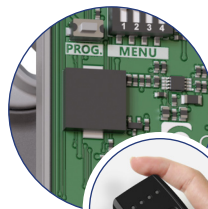
**IP65 Waterproof Housing**  
Offers exceptional resistance to extreme weather conditions.



**Independent PIR Sensors**  
2x Two Independent PIR Sensors with non-overlapping fields of view giving improved false alarm immunity. Adjustable detection range between 2m to 12m in both directions, 24 metres max.



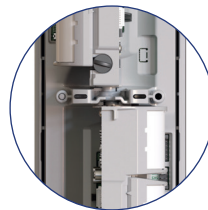
**Walk Test Sounder**  
Sounder activates during walk test to ensure reliable detection.



**Wireless Walk Test Fob**  
Gives a visual and vibrating indication of detection during a walk test to aid testing in bright conditions.



**Coverage**  
180° coverage (90° from each pair).





### XD4

180° External 4 x PIR, 2 x 12m

- Four Separate PIR Detectors - 2 pairs
- 180° coverage - 90° from each pair
- 4m to 24m Adjustable Detection Range
- Built-In Walk Test Sounder
- Optional Wireless Walk Test Fob
- IP65 Waterproof Sealed Housing
- Animal Immunity
- Day/Night Sensor
- Hinged PCB for Easy Installation

Wired



### XD4-DT

180° External 4 x PIR + Dual Technology, 2 x 12m

- Four Separate PIR Detectors - 2 pairs
- Dual Tech Microwave (24GHz) / PIR
- 180° coverage - 90° from each pair
- 4m to 24m Adjustable Detection Range
- Built-In Walk Test Sounder
- Optional Wireless Walk Test Fob
- IP65 Waterproof Sealed Housing
- Animal Immunity
- Day/Night Sensor
- Hinged PCB for Easy Installation

Wired



### XD4-DT-AM

Anti-Masking 180° External 4 x PIR + Dual Technology, 2 x 12m

- Four Separate PIR Detectors - 2 pairs
- Anti-Masking Detection
- Dual Tech Microwave (24GHz) / PIR
- 180° coverage - 90° from each pair
- 4m to 24m Adjustable Detection Range
- Built-In Walk Test Sounder
- Optional Wireless Walk Test Fob
- IP65 Waterproof Sealed Housing
- Animal Immunity
- Day/Night Sensor
- Hinged PCB for Easy Installation

Wired



### W-XD4

Wireless 180° External 4 x PIR 180°, 2 x 12m

- Four Separate PIR Detectors - 2 pairs
- 180° coverage - 90° from each pair
- 4m to 24m Adjustable Detection Range
- Built-In Walk Test Sounder
- Optional Wireless Walk Test Fob
- IP65 Waterproof Sealed Housing
- Animal Immunity
- Day/Night Sensor
- Hinged PCB for Easy Installation
- Wireless Range >150m Line of Sight
- 2 Way Wireless Communications

Wireless



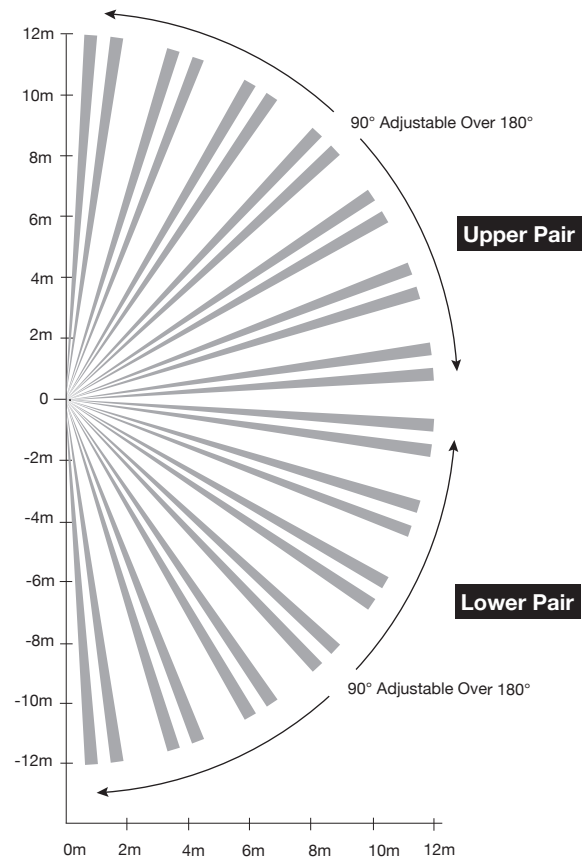
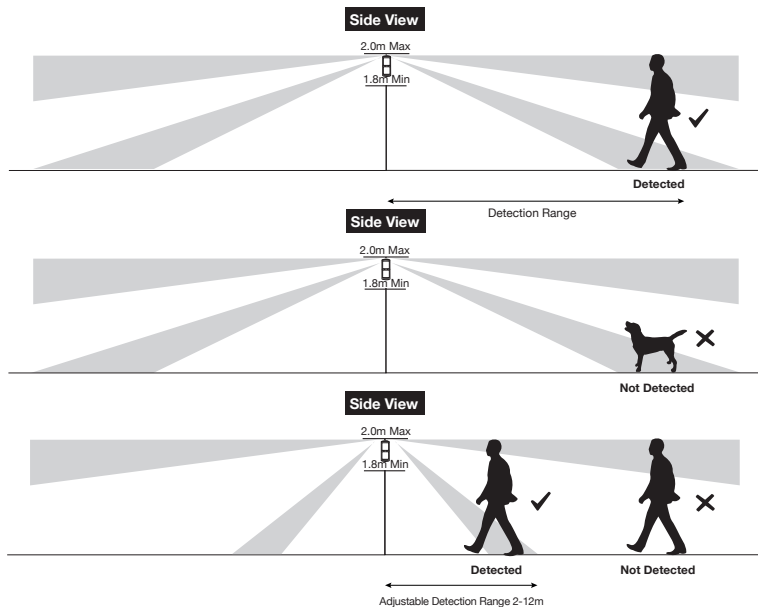
### W-XD4-DT

Wireless 180° External 4 x PIR + Dual Technology, 2 x 12m

- Four Separate PIR Detectors - 2 pairs
- Dual Tech Microwave (24GHz) / PIR
- 4m to 24m Adjustable Detection Range
- Built-In Walk Test Sounder
- Optional Wireless Walk Test Fob
- IP65 Waterproof Sealed Housing
- Animal Immunity
- Day/Night Sensor
- Hinged PCB for Easy Installation
- Wireless Range >150m Line of Sight
- 2 Way Wireless Communications

Wireless

Only detects when both PIRs in either pair are triggered.  
This gives improved false alarm immunity.



Model						
Connectivity	WIRED / WIRELESS*	WIRED / WIRELESS*	WIRED / WIRELESS*	WIRED / WIRELESS*	WIRELESS	WIRELESS
Product Name	XD4	XD4-DT	XD4-VB-AM	XD4-DT-AM	W-XD4	W-XD4-DT
Description	180° External 4 x PIR, 2 x 12m	180° External 4 x PIR + Dual Technology, 2 x 12m	Anti-Masking External 2 x Vertical Beams PIR	Anti-Masking 180° External 4 x PIR + Dual Technology, 2 x 12m	Wireless 180° External 4 x PIR, 2 x 12m	Wireless 180° External 4 x PIR + Dual Technology, 2 x 12m
Detection Technology	2 x Twin PIR, non-overlapping	2 x Twin PIR, non-overlapping Dual Technology Combined Microwave (24GHz) / PIR	2 x Vertical Beam/Curtain PIR	2 x Twin PIR, non-overlapping Dual Technology Combined Microwave (24GHz) / PIR	2 x Twin PIR, non-overlapping	2 x Twin PIR, non-overlapping Dual Technology Combined Microwave (24GHz) / PIR
Primary Application	Intruder Alarms	Intruder Alarms	Intruder Alarms	Intruder Alarms	Intruder Alarms	Intruder Alarms
Optional Wireless Access Point*	✓	✓	✓	✓	-	-
Optional Walk Test Fob (W-KF-WT)	✓	✓	✓	✓	✓	✓
Anti-Masking	-	-	✓	✓	-	-
Range	2 x 12m x 90°	2 x 12m x 90°	2 x 15m x 5°	2 x 12m x 90°	2 x 12m x 90°	2 x 12m x 90°
Detection Areas	4 x 18	4 x 18	2 x 4	4 x 18	4 x 18	4 x 18
Recommended Mounting Height	1.8m – 2.0m	1.8m – 2.0m	2.0m to 3.0m	1.8m – 2.0m	1.8m – 2.0m	1.8m – 2.0m
Adjustable Pan	✓	✓	✓	✓	✓	✓
Sunlight Immunity	>50,000 Lux	>50,000 Lux	>50,000 Lux	>50,000 Lux	>50,000 Lux	>50,000 Lux
Microwave Frequency	-	K Band, 24.15-24.25 GHz	K Band, 24.15-24.25 GHz	K Band, 24.15-24.25 GHz	-	K Band, 24.15-24.25 GHz
Tamper	Lid and wall	Lid and wall	Lid and wall	Lid and wall	Lid and wall	Lid and wall
Programmable Alarm Outputs	2	2	2	2	-	-
Day / Night Sensor	✓	✓	✓	✓	✓	✓
Pulse Count	Digital 1, 2, 3 or 4	Digital 1, 2, 3 or 4	Digital 1, 2, 3 or 4	Digital 1, 2, 3 or 4	Digital 1, 2, 3 or 4	Digital 1, 2, 3 or 4
Programmable Low Level Piezo	✓	✓	✓	✓	✓	✓
Battery	-	-	-	-	CR123A 3V Lithium	CR123A 3V Lithium
Average Battery Life	-	-	-	-	> 2 Years	> 2 Years
True Battery Reading	-	-	-	-	✓	✓
Frequencies	-	-	-	-	868.65MHz & 869.15MHz	868.65MHz & 869.15MHz
Frequency Hopping Technology	-	-	-	-	✓	✓
2 Way Wireless Communications	-	-	-	-	✓	✓
Typical Wireless Range	-	-	-	-	>150m Line of Sight	>150m Line of Sight
Housing	Graphite or White ASA	Graphite or White ASA	Graphite or White ASA	Graphite or White ASA	Graphite or White ASA	Graphite or White ASA
Dimensions (HxWxD) mm	252 x 96 x 104	252 x 96 x 104	252 x 96 x 104	252 x 96 x 104	252 x 96 x 104	252 x 96 x 104
EN 50131	Grade 2, Class IV	Grade 2, Class IV	Grade 3, Class IV	Grade 3, Class IV	Grade 2, Class IV	Grade 2, Class IV
Protection	IP65	IP65	IP65	IP65	IP65	IP65

	W-KF-WT	Wireless Walk Test Fob	Compatible with all external detectors, the W-KF-WT gives a visual and vibrating indication of detection during a walk test.
---	---------	------------------------	--

\*The W-AP Wireless Access Point adds wireless connectivity to a wired device enabling full wireless integration and/or use of the Wireless Walk Test Fob. A local power supply is required for the detector.