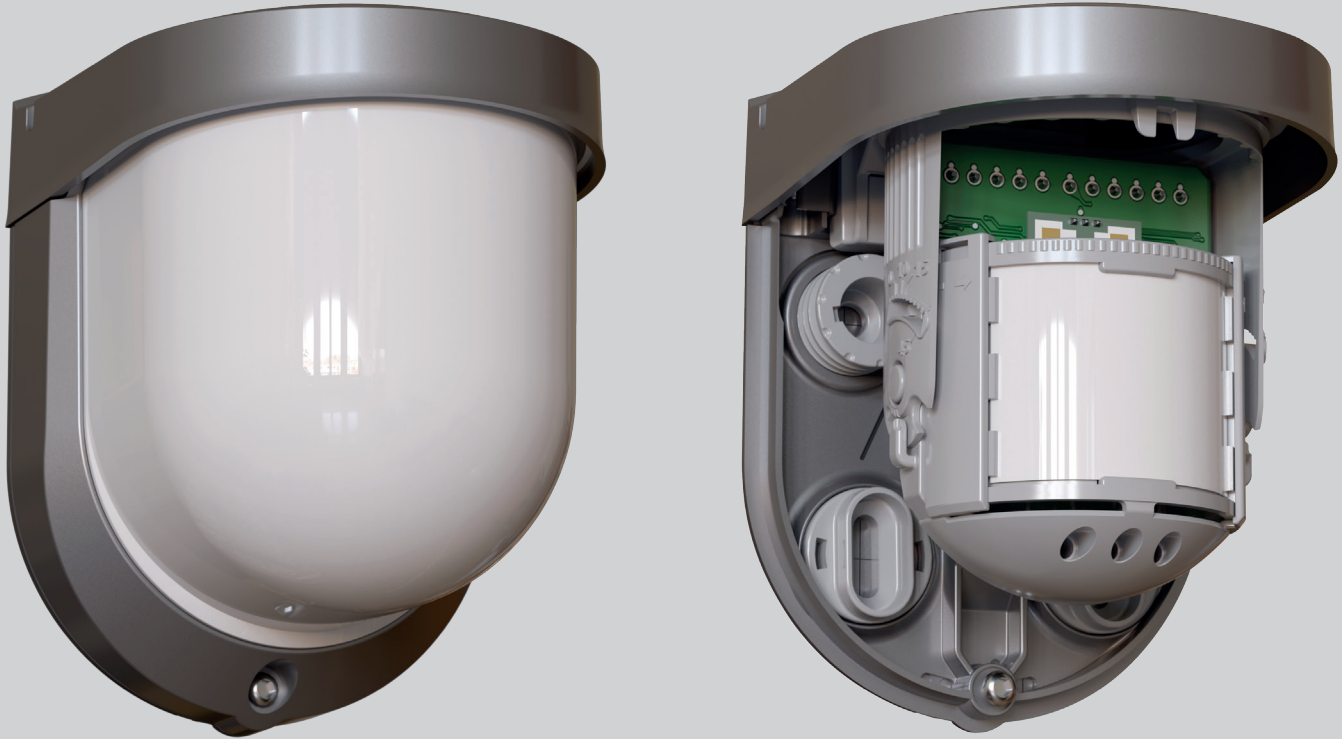
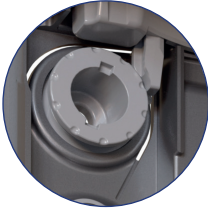


XD1 Series

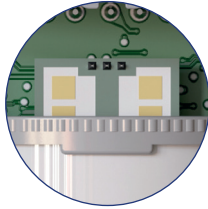
Wired & Wireless External Detectors



Tamper
Adjustable wall tamper screw.



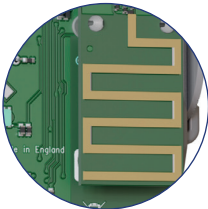
Microwave Sensor
Optional Dual Technology versions available.



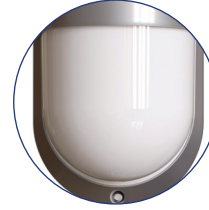
Removable PCB Assembly
The detector assembly may be removed from the backplate for easy installation.



Optional Wireless Access Point
Adds wireless connectivity to a wired device enabling full wireless integration and/or use of the Wireless Walk Test Fob.

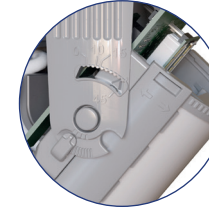


IP65 Waterproof Housing
Offers exceptional resistance to extreme weather conditions.

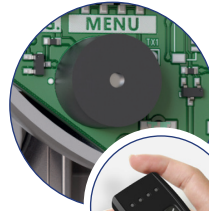


Range
The vertical angle of the PCB may be adjusted from 0° to 45°. This can be used to:

- Alter the PIR range,
- Allow for different mounting heights, or
- Allow for sloping areas to be protected.



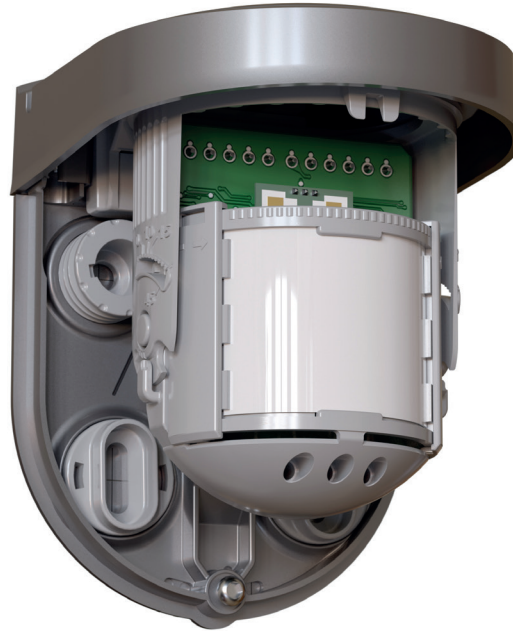
Walk Test Sounder
Sounder activates during walk test to ensure reliable detection.



Wireless Walk Test Fob
Gives a visual and vibrating indication of detection during a walk test to aid testing in bright conditions.



Coverage
100° coverage angle which may be adjusted over 180° by rotating the chassis.





XD1
External PIR - Wide Angle 20m

- BS 8418 CCTV Compliant
- 2.5m to 3.0m Mounting Height
- Adjustable Pan & Tilt
- Built-In Walk Test Sounder
- Optional Wireless Walk Test Fob
- IP65 Waterproof Sealed Housing
- Day/Night Sensor
- Available in High Density ASA or High Impact Zinc Alloy

Wired



W-XD1
Wireless External PIR - Wide Angle 20m

- BS 8418 CCTV Compliant
- 2.5m to 3.0m Mounting Height
- Adjustable Pan & Tilt
- Built-In Walk Test Sounder
- Optional Wireless Walk Test Fob
- IP65 Waterproof Sealed Housing
- Day/Night Sensor
- Wireless Range >150m Line of Sight
- 2 Way Wireless Communications

Wireless



XD1-DT
External Dual Technology - Wide Angle 15m

- BS 8418 CCTV Compliant
- Dual Tech Microwave (24GHz) / PIR
- 2.5m to 3.0m Mounting Height
- Adjustable Pan & Tilt
- Built-In Walk Test Sounder
- Optional Wireless Walk Test Fob
- IP65 Waterproof Sealed Housing
- Day/Night Sensor
- Available in High Density ASA or High Impact Zinc Alloy

Wired



XD1-DT-AM
Anti-Masking External Dual Technology - Wide Angle 15m

- BS 8418 CCTV Compliant
- Anti-Masking Detection
- Dual Tech Microwave (24GHz) / PIR
- 2.5m to 3.0m Mounting Height
- Adjustable Pan & Tilt
- Built-In Walk Test Sounder
- Optional Wireless Walk Test Fob
- IP65 Waterproof Sealed Housing
- Day/Night Sensor
- Available in High Density ASA or High Impact Zinc Alloy

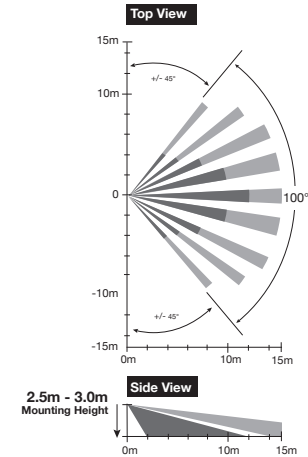
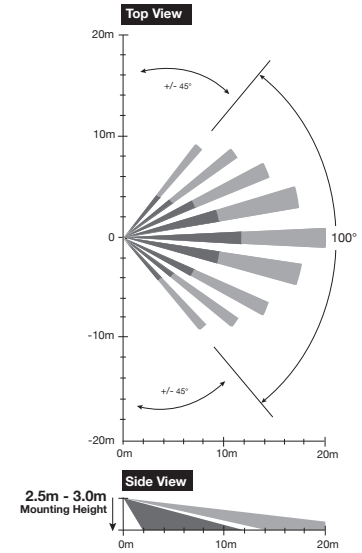
Wired



W-XD1-DT
Wireless External Dual Technology - Wide Angle 15m

- BS 8418 CCTV Compliant
- Dual Tech Microwave (24GHz) / PIR
- 2.5m to 3.0m Mounting Height
- Adjustable Pan & Tilt
- Built-In Walk Test Sounder
- Optional Wireless Walk Test Fob
- IP65 Waterproof Sealed Housing
- Day/Night Sensor
- Wireless Range >150m Line of Sight
- 2 Way Wireless Communications

Wireless





XD1-VB
External PIR - Vertical Beam 15m

- Vertical Beam/Curtain Detector
- BS 8418 CCTV Compliant
- 2.0m to 3.0m Mounting Height
- Adjustable Pan & Tilt
- Built-In Walk Test Sounder
- Optional Wireless Walk Test Fob
- IP65 Waterproof Sealed Housing
- Day/Night Sensor
- Available in High Density ASA or High Impact Zinc Alloy

Wired



W-XD1-VB
Wireless External PIR - Vertical Beam 15m

- Vertical Beam/Curtain Detector
- BS 8418 CCTV Compliant
- 2.0m to 3.0m Mounting Height
- Adjustable Pan & Tilt
- Built-In Walk Test Sounder
- Optional Wireless Walk Test Fob
- IP65 Waterproof Sealed Housing
- Day/Night Sensor
- Wireless Range >150m Line of Sight
- 2 Way Wireless Communications

Wireless



XD1-LR
External PIR - Long Range 50m

- Long Range 50m Detector
- BS 8418 CCTV Compliant
- Adjustable Pan & Tilt
- Built-In Walk Test Sounder
- Optional Wireless Walk Test Fob
- IP65 Waterproof Sealed Housing
- Day/Night Sensor
- Available in High Density ASA or High Impact Zinc Alloy

Wired



W-XD1-LR
Wireless External PIR - Long Range 50m

- Long Range 50m Detector
- BS 8418 CCTV Compliant
- Adjustable Pan & Tilt
- Built-In Walk Test Sounder
- Optional Wireless Walk Test Fob
- IP65 Waterproof Sealed Housing
- Day/Night Sensor
- Wireless Range >150m Line of Sight
- 2 Way Wireless Communications

Wireless

