

ION-R200

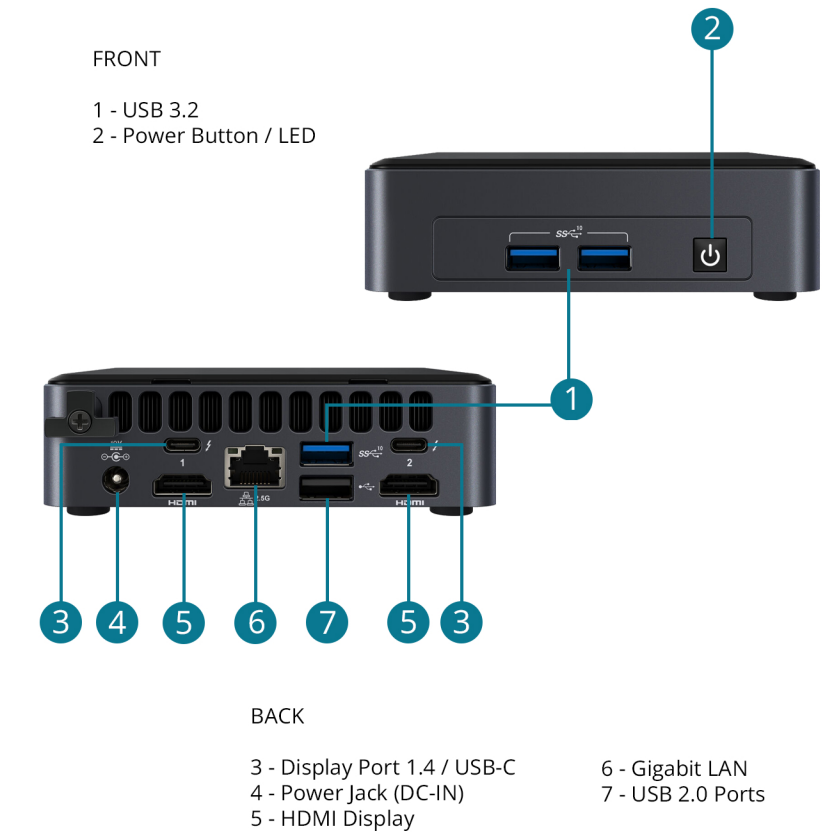
Powerful & Ultra Compact Dual Monitor Secure Display Station



A - PACKAGE CONTENTS

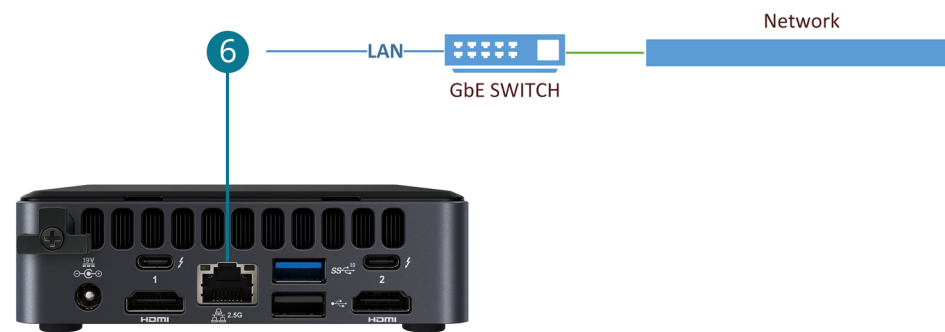


B - HARDWARE



C - NETWORK

- Connect the LAN network port of the unit to the video network switch.



D - ACCESSORIES

For initial configuration or for maintenance purposes, you may require locally access the device's user interface.

- Connect a keyboard and mouse to the unit's USB ports
- Connect monitor(s) to the unit's HDMI port(s)

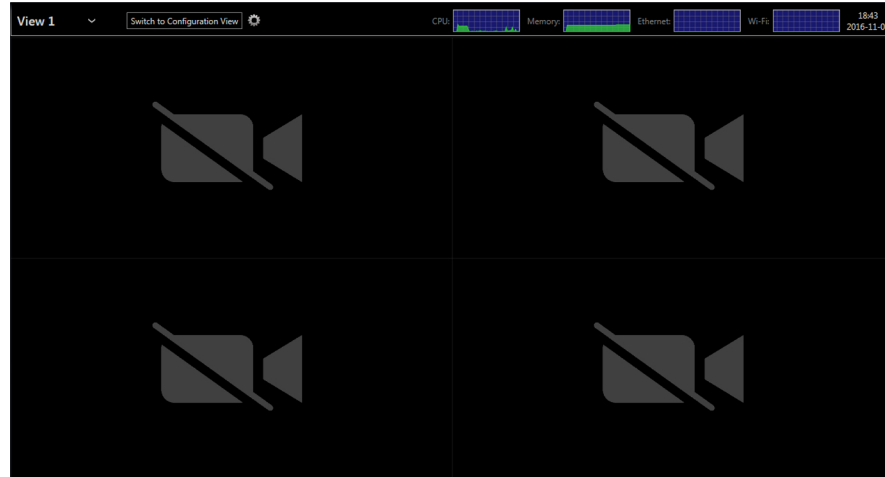


E - NETWORK

- Connect the provided power supply to the unit's POWER JACK
- The unit will automatically power on and boot-up as soon as the power supply is connected
- You DO NOT need to press the POWER BUTTON to boot the unit when in factory default configuration
- If a valid power supply is connected, the POWER STATUS LED will light up steady blue

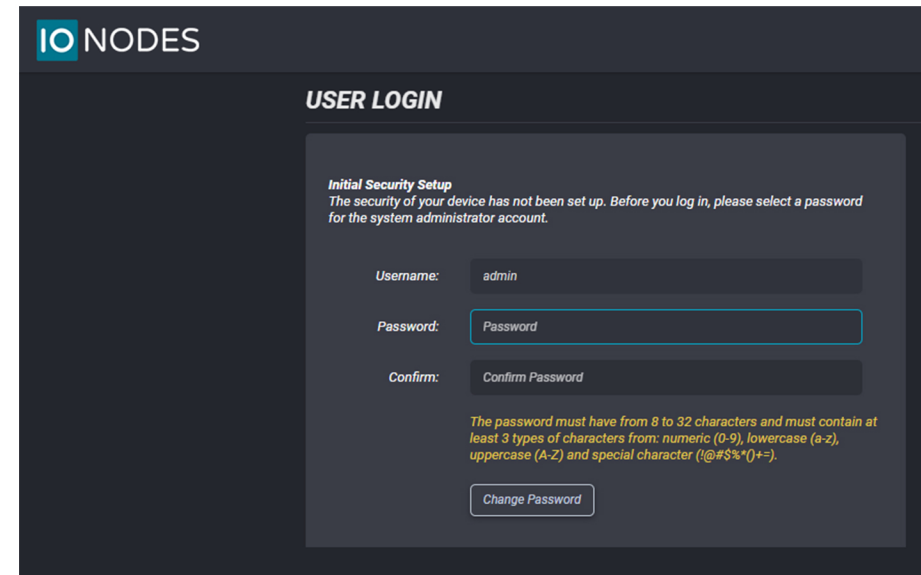
F - MAIN SCREEN

- At first boot-up of the unit, the main user interface will appear
- Click "Switch to Configuration View" for initial device setup
- Follow the user manual for setup steps



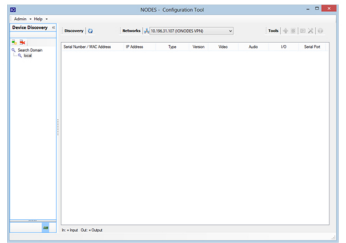
G - USER INTERFACE

- Upon first login you will be prompted to select the initial password for the admin account as shown in the screenshot below.



H - REMOTE ACCESS

- You can discover the unit on the network using the IonConfigTool application; you can download the IonConfigTool from our website at www.ionodes.com
- You can access the unit's configuration web interface by right-clicking on the unit found in the IonConfigTool and selecting the Configuration Web Page option



I - POWERING OFF

- You may initiate a power down of the unit by pushing and releasing the POWER BUTTON
- The unit may take a few minutes to complete its shutdown
- You can disconnect power from the unit while it is still running as the device is protected from data loss or corruption

J - FACTORY RESET

In the event your system has become corrupted or unusable in any way, or you simply wish to reload your system to its factory default operating system image, the appliance offers a safe mode mechanism. This mechanism will prevent your unit from decoding any video and therefore return it to a temporary stable state.

1. Reboot the unit
2. During boot up, simultaneously press on the LEFT SHIFT and RIGHT SHIFT keyboard keys
3. When the device detects the key combination, it acknowledges the switch to safe mode operation
4. Go to the device's configuration and apply required changes
5. You may also initiate a reload to factory settings from the administrative page under the maintenance section. In safe mode, a button in the top banner allows reloading factory settings
6. Once new settings are applied, reboot the device
7. The device will now boot under regular mode

THANK YOU

Thank you for purchasing an ION-R200 appliance. Should you require any assistance or support with this or any other IONODES product, please contact our support team using one of the below methods:

Via Email: support@ionodes.com
Via Phone: 1-450-696-1060
1-844-696-1060 (toll free)

You can also visit our website to access product manuals, firmware updates as well as other product related information.



www.ionodes.com